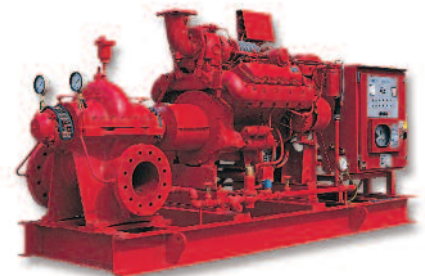




# Highly Evolved...



**Total Performance**  
Fire Pump Packages

# End Suction



## The protection of life is not a matter for compromise

This is particularly true for fire protection systems where they are only as strong as their 'weakest link' and compromise may result in avoidable loss of life or property.

That is why SPP fire pumps are designed specifically for the very particular needs of fire protection and are approved by most of the major fire protection bodies around the world

By selecting an approved SPP fire pump as part of an approved system and maintained in accordance with standards such as NFPA 20, you can sleep easy knowing that you have chosen the best you can get.

## FM/UL End-Suction Fire Pumps

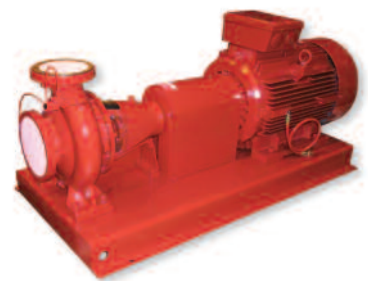
SPP Pumps have been manufacturing fire pumps for over 125 years and with one of the widest range of approvals of any manufacturer in the world. Experience gained from extreme environments such as off-shore oil & gas installations has led to the creation of the SPP FM/UL Unistream and Eurostream range of pumps approved for fire protection by FM Approvals and Underwriter Laboratories and fully compliant to NFPA 20.

## SPP End Suction fire pumps can be found in most types of installation around the world including:

- Office buildings
- Hospitals
- Airports
- Manufacturing facilities
- Power stations
- Pharmaceutical facilities
- Schools/colleges

## Typical Applications:

- Sprinkler systems
- Hydrant systems
- Deluge systems
- Monitor systems
- Water curtain

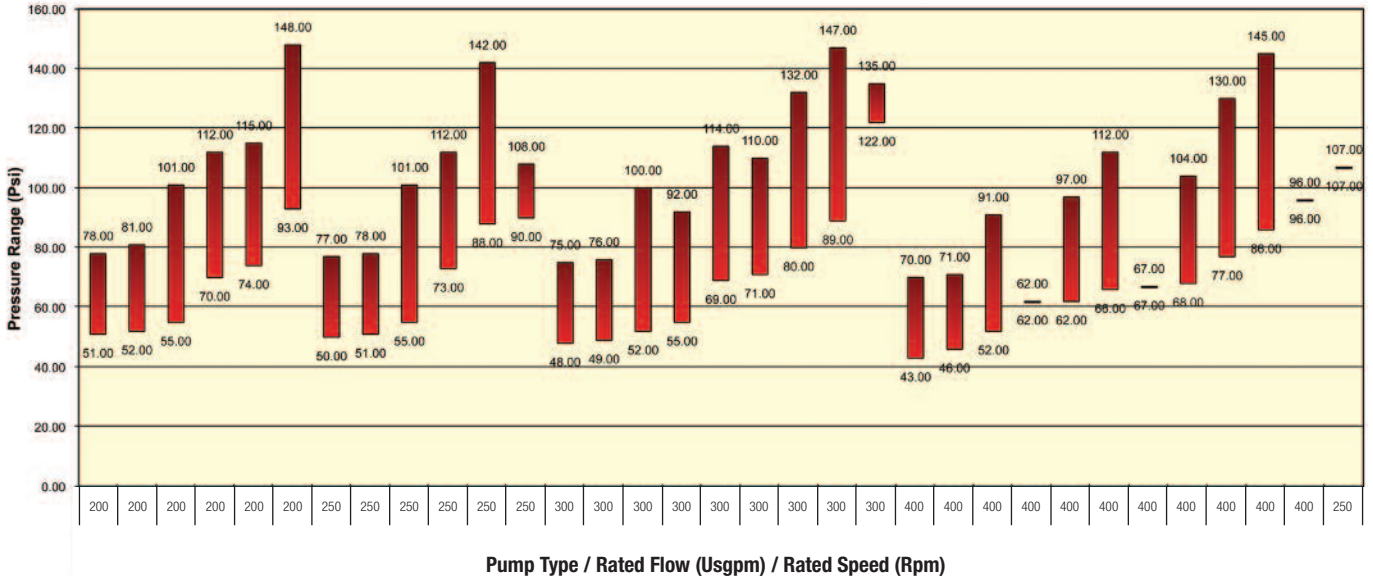


SPP End-Suction fire pumps are available for duties ranging from 200 USgpm to 1500 USgpm and are suitable for electric or diesel drives. The table below demonstrates how the range of End-Suction pumps are designed to meet most normal requirements.

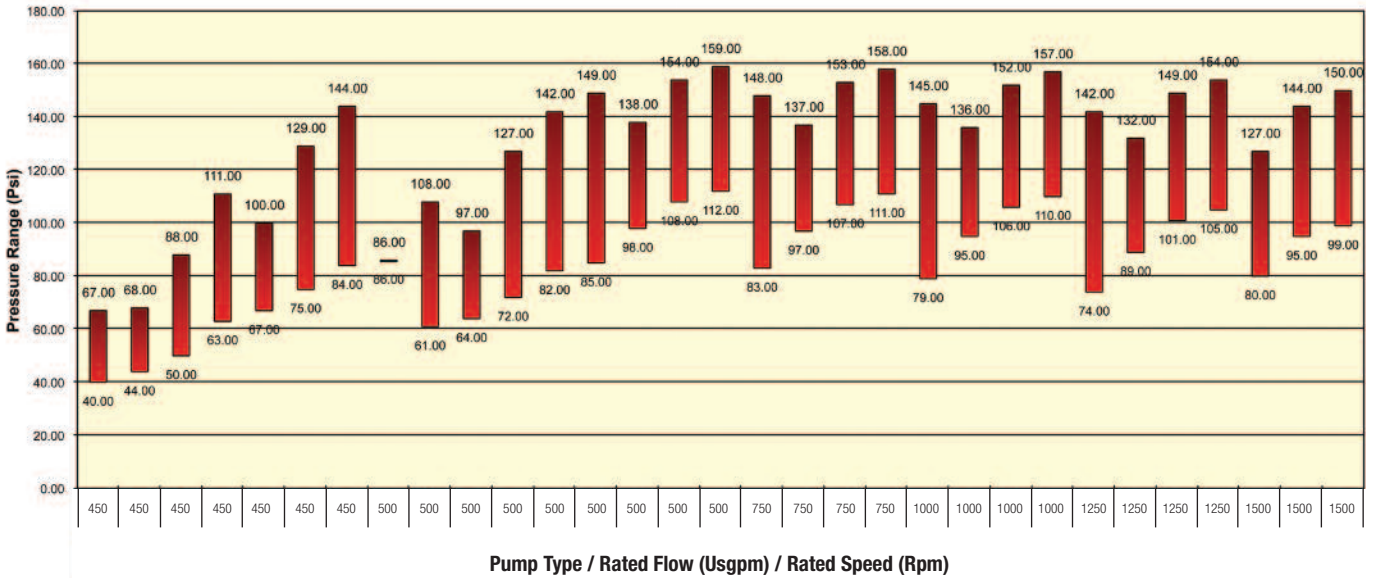
SPP also supplies Vertical Turbine, Split Case and In-line fire pumps. SPP End-Suction pumps are available with either inch or metric fittings.

**Examples of UL Approvals up to 2500 USgpm. Further pumps available up to 5000 USgpm.**

**End Suction ( 1450rpm - 3500rpm ) 200 Usqpm - 400 Usqpm**



**End Suction ( 1450rpm - 3500rpm ) 450 Usqpm - 1500 Usqpm**



Assessed to ISO 9001:2000  
Certificate No. 111



[www.sppumps.com](http://www.sppumps.com)



**Fire Protection**



**Water & Industrial**



**Autoprime**



**Oil & Gas**



**Spares & Service**

**Company History:**

For more than 100 years SPP Pumps has been a leading manufacturer of centrifugal pumps and associated systems. Installed globally, SPP pumps provide valuable high integrity services for diverse industries such as oil and gas production, airports, hotels, water and waste water treatment, construction, mines and for large industrial plants.



Highly  
**Evolved . . .**



**. . . throughout the World**

**North & South America**

6710 Best Friend Road  
Norcross, GA 30071  
Ph: 1 (770) 409 3280  
Fax: 1 (770) 409 3290

**UK Headquarters**

Theale Cross, Pincents Lane, Calcot  
Reading, Berkshire, RG31 7SP  
Ph: 44 (0) 118 932 3123  
Fax: 44 (0) 118 932 3302

**France**

2, rue du Chateau d'eau,  
95450 US  
Ph: 33 (0) 1 30 27 96 96  
Fax: 33 (0) 1 34 66 07 33

**Middle East**

P O Box 61491, Jebel Ali  
Dubai United Arab Emirates  
Ph: 971 (0) 4 8838 733  
Fax: 971 (0) 4 8838 735

**Asia**

10 Anson Road, #34-06  
Singapore 079903  
Ph: (65) 6226 1937  
Fax: (65) 6226 2985

**South Africa**

39 Forge Road, Spartan,  
1625 Johannesburg, R.S.A  
Ph: (27) 11 394 3922  
Fax: (27) 11 970 2472