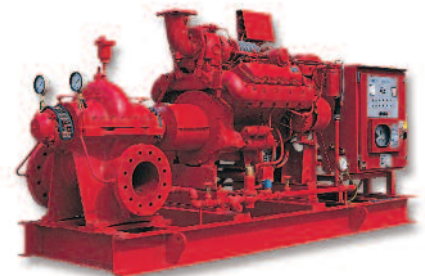




# Highly Evolved...



**Total Performance**  
Fire Pump Packages

# Resi-stream



## SPP Pumps Resi-stream 13D residential fire pump

**SPP Pumps is proud to introduce the Resi-stream home fire protection system.**

- The Resi-stream is fully compliant to NFPA 13D standards and comes pre-assembled and hydraulically tested in excess of 200psi from the factory.
- The Resi-stream home fire protection system arrives ready to install and pre-wired for simple error free electrician hook up.
- The Resi-stream comes in 2 styles both the open unit with corrosion resistant base for mounting as well as the fully enclosed unit for simple and complete installation.
- Both units are available in either 115 or 220 volt single phase power depending on horsepower.
- Bronze fittings and connections help to reduce if not eliminate corrosion and help ensure a reliable home fire protection pumping system for many, many years.
- To ensure peace of mind, we will also offer a 1 year limited factory warranty, so that you can feel safe knowing your family is protected.
- The Resi-stream is one more product we offer that makes SPP your “one stop shop” for all of your fire pumping needs.

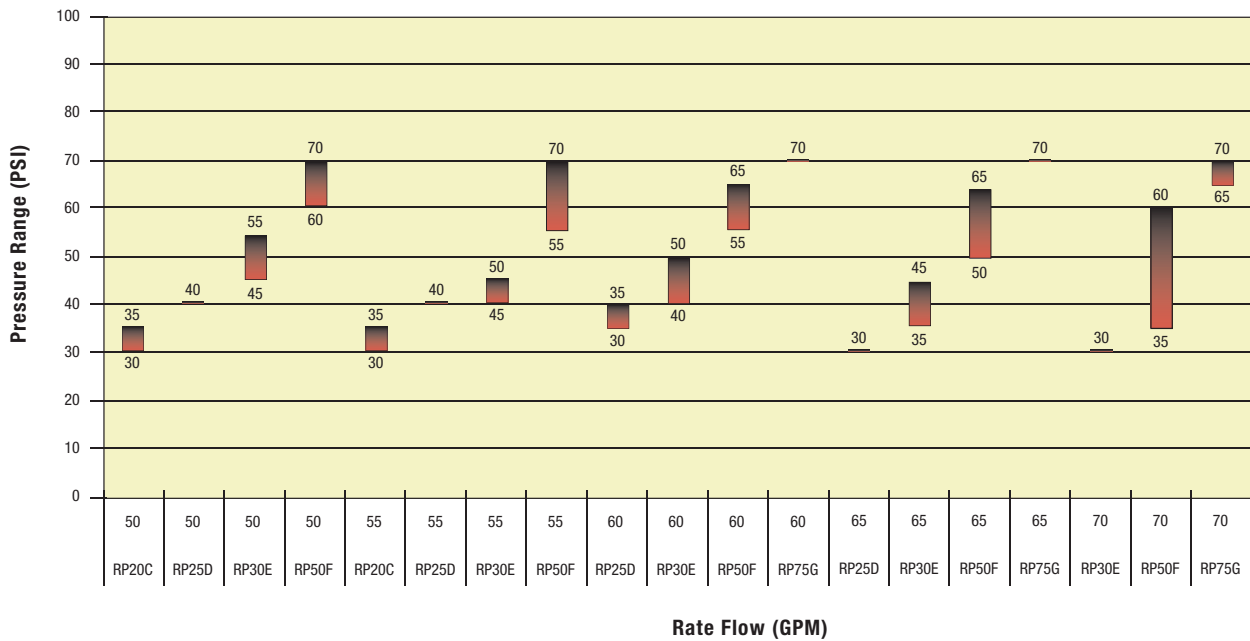
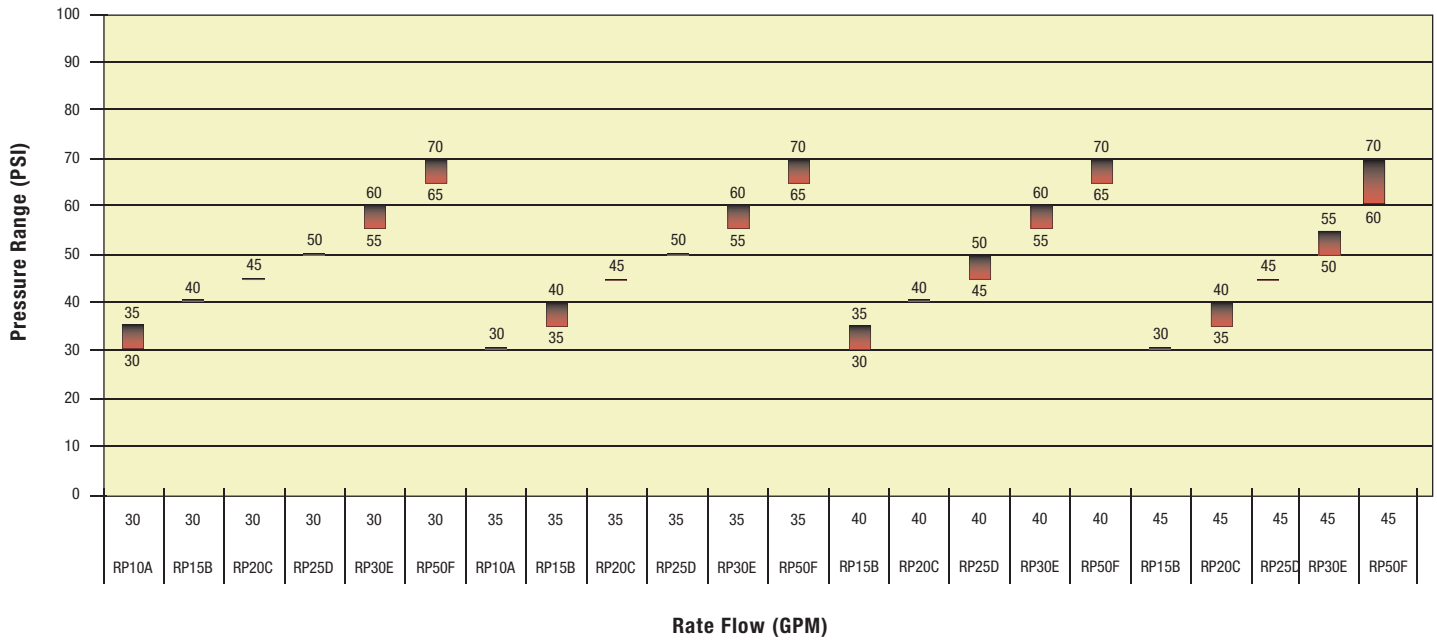
## A Global Presence

**SPP Pumps have been working with consultants, contractors, installers and end-users for more than a century to achieve the most cost effective Fire system pumping solutions.**

- It is no wonder that since SPP Fire was formed in 1875, it has built a reputation for quality and value that has made it unquestionably the leading supplier of Approved Fire Protection Pumping Packages throughout the World.
- We now have 6 facilities worldwide that offer the same attention to quality and value that has made SPP Pumps a market leader for over 100 years.

**SPP PUMPS INC.**

## 13D Horsepower Selection Chart



## Water Storage Tanks

SPP Pumps Resi-stream can be supplied with water storage tanks. They are supplied with a standard 1 year manufacturer's warranty and fit through most standard doorways. The Resi-stream tanks have automatic fill valves, top entry lids, gallon markers and bulkhead fittings for suction, fill and overflow connections. Other tank sizes available, please ask your representative for details.

They are selected as follows:

Capacity	diameter	height	weight
130 gallons	29"	51"	35 lbs.
175 gallons	29"	66"	50 lbs.
300 gallons	34"	82"	85 lbs.
310 gallons	32"	93"	90 lbs.
425 gallons	42"	75"	100 lbs.





**Fire Protection**



**Water & Industrial**



**Autoprime**



**Oil & Gas**



**Spares & Service**

**Company History:**

For more than 100 years SPP Pumps has been a leading manufacturer of centrifugal pumps and associated systems. Installed globally, SPP pumps provide valuable high integrity services for diverse industries such as oil and gas production, airports, hotels, water and waste water treatment, construction, mines and for large industrial plants.



Highly  
**Evolved . . .**



**. . . throughout the World**

**North & South America**

6710 Best Friend Road  
Norcross, GA 30071  
Ph: 1 (770) 409 3280  
Fax: 1 (770) 409 3290

**UK Headquarters**

Theale Cross, Pincents Lane, Calcot  
Reading, Berkshire, RG31 7SP  
Ph: 44 (0) 118 932 3123  
Fax: 44 (0) 118 932 3302

**France**

2, rue du Chateau d'eau,  
95450 US  
Ph: 33 (0) 1 30 27 96 96  
Fax: 33 (0) 1 34 66 07 33

**Middle East**

P O Box 61491, Jebel Ali  
Dubai United Arab Emirates  
Ph: 971 (0) 4 8838 733  
Fax: 971 (0) 4 8838 735

**Asia**

10 Anson Road, #34-06  
Singapore 079903  
Ph: (65) 6226 1937  
Fax: (65) 6226 2985

**South Africa**

39 Forge Road, Spartan,  
1625 Johannesburg, R.S.A  
Ph: (27) 11 394 3922  
Fax: (27) 11 970 2472