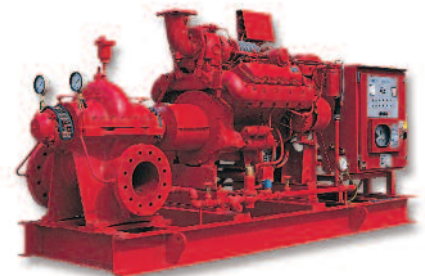




# Highly Evolved...



**Total Performance**  
Fire Pump Packages

# Vertical Turbine



## FM/UL Vertical Turbine Fire Pumps

SPP Pumps have been manufacturing fire pumps for over 125 years with one of the widest range of approvals of any manufacturer in the world. Experience gained from extreme environments such as off-shore oil & gas installations has led to the creation of the SPP FM/UL Vertical Turbine range of fire pumps approved for fire protection by FM Approvals and Underwriter Laboratories and fully compliant to NFPA 20.

Where the fire protection water source is located below ground or deck level, the best technical pumping solution is the vertical suspended multi stage turbine pump. With this type of unit the impellers are fully immersed in the water maintaining prime at all times. The pumps are driven by vertical electric motors or by diesel engines through a right angle gearbox



## SPP Vertical Turbine Pumps can be found in most types of installation around the world including:

- Office Buildings
- Manufacturing Facilities
- Hospitals
- Power Stations
- Airports
- Pharmaceutical Facilities

## Applications include:

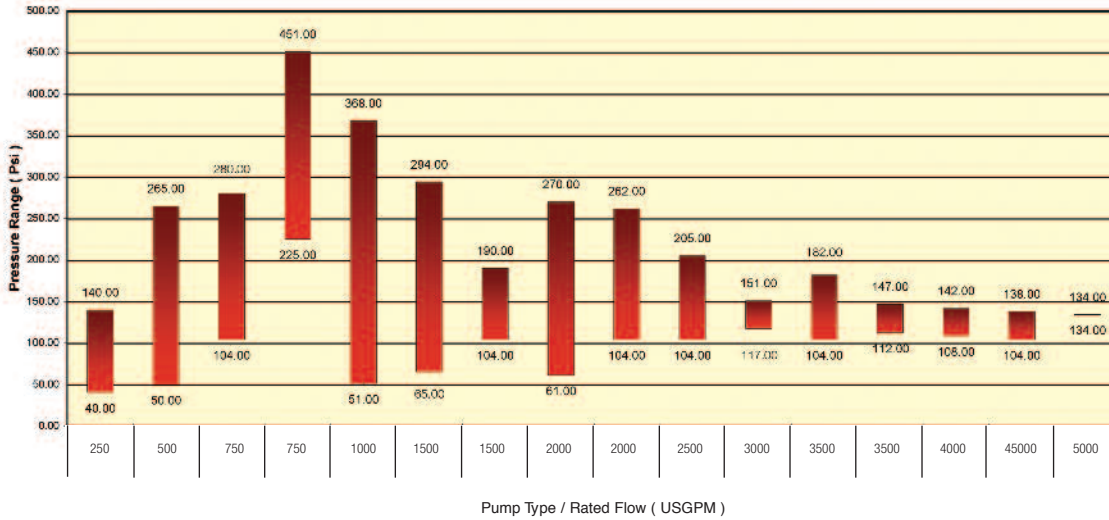
- Sprinkler Systems
- Monitor Systems
- Hydrant Systems
- Water Curtain
- Deluge Systems

SPP Vertical Turbine FM/UL Approved Fire Pumps are available for duties ranging from 500 USgpm to 5000 USgpm and are suitable for electric or diesel drives. The table below demonstrates how the range of Vertical Turbine FM/UL approved pumps are designed to meet most normal requirements.

SPP also supplies Split-Case, End-Suction and In-line fire pumps. SPP Vertical Turbine FM/UL Approved Fire Pumps are available with either inch or metric fittings.

**Examples of FM/UL Approvals up to 5000 USgpm.**

**60Hz ( 1760rpm ) 250 Usqpm - 5000 Usqpm**



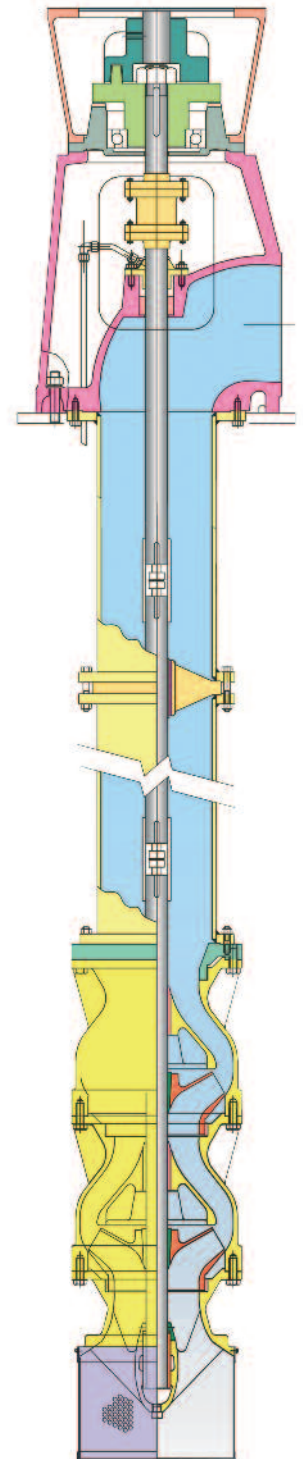
SPP Vertical Turbine pumps can also be custom engineered for the oil and gas industry and can handle fresh water or sea water for cooling purposes, fire protection duties, general water supply, washdown or drill water. They can also be used for handling crude oil or controlling spillages. For platform or jetty locations they can be provided with a below-deck discharge if required.



SPP vertical lineshaft pump directly driven by a 1200kw electric motor



SPP Vertical Turbine pump on test



Assessed to ISO 9001:2000  
Certificate No. 111



[www.sppumps.com](http://www.sppumps.com)



**Fire Protection**



**Water & Industrial**



**Autoprime**



**Oil & Gas**



**Spares & Service**

**Company History:**

For more than 100 years SPP Pumps has been a leading manufacturer of centrifugal pumps and associated systems. Installed globally, SPP pumps provide valuable high integrity services for diverse industries such as oil and gas production, airports, hotels, water and waste water treatment, construction, mines and for large industrial plants.



Highly  
**Evolved . . .**



**. . . throughout the World**

**North & South America**

6710 Best Friend Road  
Norcross, GA 30071  
Ph: 1 (770) 409 3280  
Fax: 1 (770) 409 3290

**UK Headquarters**

Theale Cross, Pincents Lane, Calcot  
Reading, Berkshire, RG31 7SP  
Ph: 44 (0) 118 932 3123  
Fax: 44 (0) 118 932 3302

**France**

2, rue du Chateau d'eau,  
95450 US  
Ph: 33 (0) 1 30 27 96 96  
Fax: 33 (0) 1 34 66 07 33

**Middle East**

P O Box 61491, Jebel Ali  
Dubai United Arab Emirates  
Ph: 971 (0) 4 8838 733  
Fax: 971 (0) 4 8838 735

**Asia**

10 Anson Road, #34-06  
Singapore 079903  
Ph: (65) 6226 1937  
Fax: (65) 6226 2985

**South Africa**

39 Forge Road, Spartan,  
1625 Johannesburg, R.S.A  
Ph: (27) 11 394 3922  
Fax: (27) 11 970 2472